

## Serviced Offices For Rent

Týnská 12  
Prague 1



### Location

Building Týnská 12 is situated in the central and prestigious location of Prague 1 right next to Old Town Square and offering great accessibility by metro, tram and car. The metro stations *Náměstí Republiky* (line B), *Staroměstská* (line A) and *Můstek* (line A, B) are only 5 minutes walk as are the nearest tram stops. This location offers very well established infrastructure and fantastic services, coffee shops and restaurants on your doorstep.

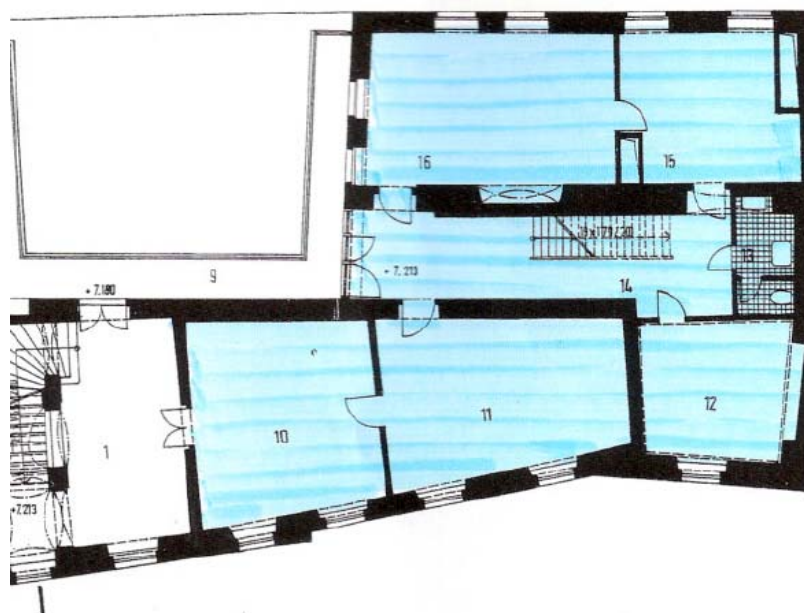
This representative building after complete reconstruction offers very attractive office space that is equipped by modern technology specifications and standards. Offices are on the second floor.

## Services

- Reception service available
- Secretarial and administration services available
- Fully furnished (desks, chairs, shelving, storage, kitchen corner)
- Off-street parking available in nearby garage
- Use of meeting room
- Separate telephone exchange
- Internet connection
- PCs, printers, fax, copier
- Security system
- 24/7 access
- Balcony

## Available Areas (sq m)

Offices 10 and 11 are available immediately.



| 2. PATRO                     |                             |
|------------------------------|-----------------------------|
| LEGENDA MÍSTNOSTÍ A PROSTORŮ |                             |
| 1. HALA, SCHODIŠTĚ           | 27,90 m <sup>2</sup>        |
| 2. KANCELÁŘ                  | 25,30 m <sup>2</sup>        |
| 3. KANCELÁŘ                  | 29,20 m <sup>2</sup>        |
| 4. KANCELÁŘ                  | 16,35 m <sup>2</sup>        |
| 5. KOMUNIKACE                | 10,10 m <sup>2</sup>        |
| 6. WC                        | 5,40 m <sup>2</sup>         |
| 7. KANCELÁŘ                  | 24,35 m <sup>2</sup>        |
| 8. ČAJOVÁ KUCHYŇ             | 11,95 m <sup>2</sup>        |
| 9. PAVLÍČ                    | 22,70 m <sup>2</sup>        |
| 10. KANCELÁŘ                 | 25,35 m <sup>2</sup>        |
| 11. KANCELÁŘ                 | 26,50 m <sup>2</sup>        |
| 12. KANCELÁŘ                 | 14,80 m <sup>2</sup>        |
| 13. WC, ÚKLID                | 4,70 m <sup>2</sup>         |
| 14. KOMUNIKACE               | 22,45 m <sup>2</sup>        |
| 15. KANCELÁŘ                 | 16,40 m <sup>2</sup>        |
| 16. KANCELÁŘ                 | 26,55 m <sup>2</sup>        |
| <b>CELKEM</b>                | <b>307,50 m<sup>2</sup></b> |

## Commercial Conditions

- Basic rent from: 12 EUR / m<sup>2</sup> / month + DPH
- Utilities (electricity, water, heating): ~3.7 EUR / m<sup>2</sup> / month + DPH
- Additional services (listed above): POA
- Lease term: 2 years
- Deposit: 2 months rent + utilities + DPH

## Pictures



Room 10



Room 11



Balcony



Kitchenette